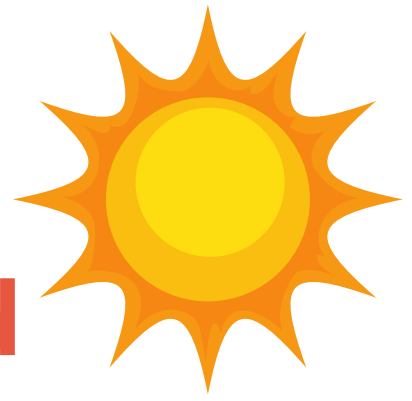


Using Mulch in Your Summer Garden: A Guide from Goodwood



During summer in New Zealand, gardeners face the challenge of keeping their plants healthy and thriving in the heat. An effective solution is to use mulch, a versatile material that offers numerous benefits for your garden during the warmer months. Here's how mulch can transform your summer garden.

Benefits of using mulch this summer:

1. Moisture retention

Mulch retains soil moisture, reducing evaporation and minimising the need for frequent watering. This helps plants withstand heat stress during New Zealand's dry summers.

2. Temperature regulation

Acts as an insulating layer, keeping soil cooler and protecting plant roots from extreme heat, which is especially beneficial for shallow-rooted plants.

3. Weed suppression

A thick layer of mulch blocks sunlight from weed seeds, preventing germination and reducing competition for nutrients and water, saving you time on weeding.

4. Soil health improvement

As it decomposes, mulch adds organic matter to the soil, enhancing fertility and structure while promoting beneficial microorganisms and earthworms.

5. Erosion control

Protects against soil erosion from heavy summer rains by reducing runoff and shielding the soil surface, crucial in New Zealand's variable climate.

6. Aesthetic appeal

Available in various colors and textures, mulch enhances your garden's visual appeal and complements landscaping, providing a tidy look. Goodwood NZ offers a range of attractive options to elevate your garden space.



How to apply mulch effectively:

To maximise the benefits of mulch in your summer garden:

- Choose quality mulch: Opt for high quality mulch from that suits your specific gardening needs
- Apply at the right depth: A layer of 5-10 cm is generally recommended to effectively suppress weeds and retain moisture
- Keep it away from plant stems: Ensure there's a small gap around plant stems to prevent rot and allow air circulation
- Replenish as needed: Over time, mulch will decompose; be sure to add more as necessary to maintain its effectiveness

Goodwood supplies landscape yards across the Bay of Plenty, Waikato and the Central North Island.

Visit our website to find your local stockist: www.goodwoodnz.co.nz

